

# PORTMAN GATE, 104 LISSON GROVE, MARYLEBONE NW1 6LW



**£500 PW**

**[£2,166 PCM] (FEES APPLY)**

**2 BEDROOM(S)**

**AVAILABLE: 6<sup>TH</sup> OCTOBER 2019**

Available for rental a duplex 2-bedroom apartment arranged over the 3rd & 4th floors of a modern gated development close to the junction of Lisson Grove and Marylebone Road, with allocated underground car parking and on-site leisure. EPC: C

- Secure gated development
- Duplex apartment
- Available furnished
- Spacious reception room
- Semi open plan fitted kitchen
- 2 x double bedrooms
- Fully tiled bathroom/WC
- Private balcony
- 24-hour security; Underground parking
- On-site leisure facilities

**T:** 020 7691 9000

**E:** [info@excel-property.co.uk](mailto:info@excel-property.co.uk)

**W:** [www.excel-property.co.uk](http://www.excel-property.co.uk)

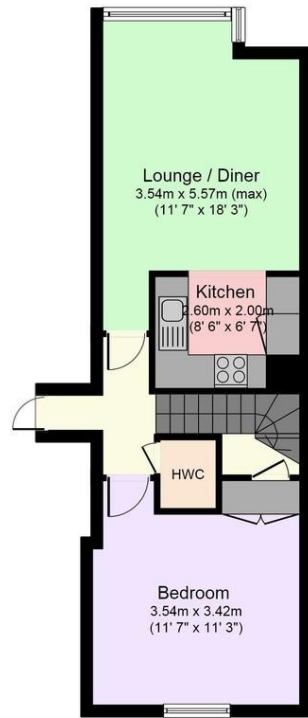
**JP:** [www.excel-property.london/JP](http://www.excel-property.london/JP)

**A:** 146 Finchley Road, London, NW3 5HS

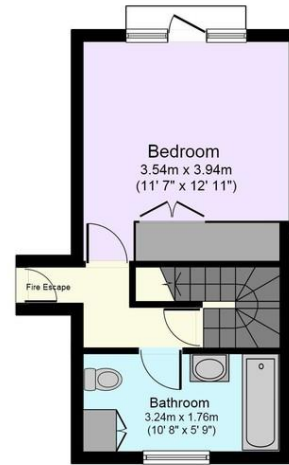


# PORTMAN GATE, 104 LISSON GROVE, MARYLEBONE NW1 6LW

Total floor area 71.1 sq. m. (765 sq. ft.) approx



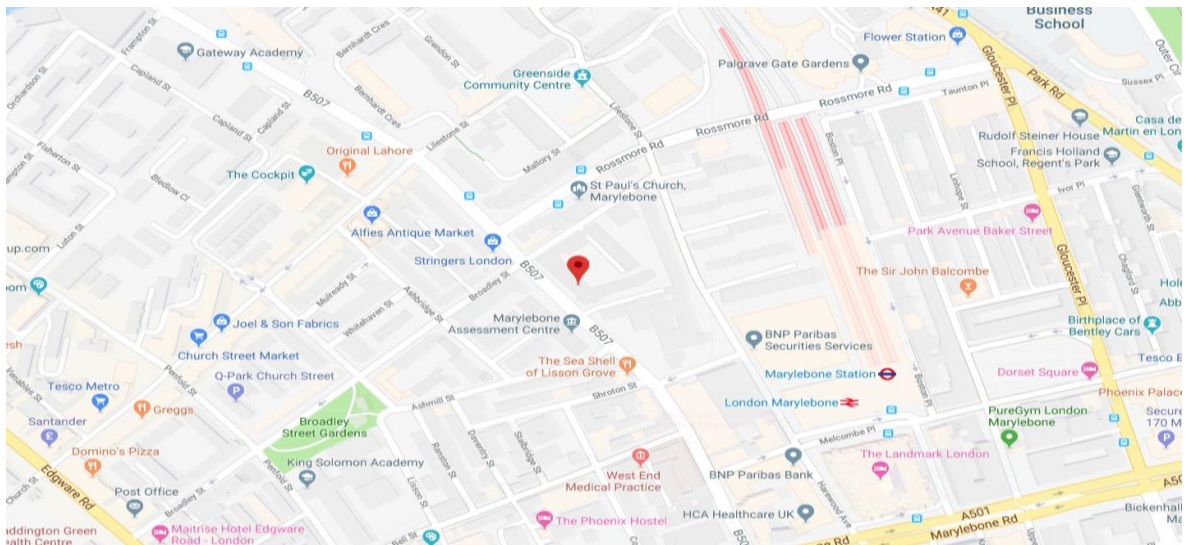
3rd Floor



4th Floor

Floor plans are for identification purposes only.  
All measurements are approximate.

Created using Vision Publisher™



T: 020 7691 9000

E: [info@excel-property.co.uk](mailto:info@excel-property.co.uk)

W: [www.excel-property.co.uk](http://www.excel-property.co.uk)

JP: [www.excel-property.london/JP](http://www.excel-property.london/JP)

A: 146 Finchley Road, London, NW3 5HS

