



£725 PW

[£3,141.67 PCM]

[FEES APPLY]

3 BEDROOM(S)

AVAILABLE: NOW

Available furnished for long term rental as sole agents, a modern 3-bedroom apartment set on the 3rd floor with allocated parking and private balcony in 20 Abbey Road, superbly located to take advantage of everything St Johns Wood has to offer. EPC: D

- Iconic development
- 3rd floor apartment
- 1190 sq ft (110 sq m)
- Reception; Private balcony
- Modern fitted kitchen
- 2 x double bedrooms
- 1 x single bedroom
- 2 x shower room/WCs
- Underground parking space
- 24-hour concierge & pool

T: 020 7691 9000

E: info@excel-property.co.uk

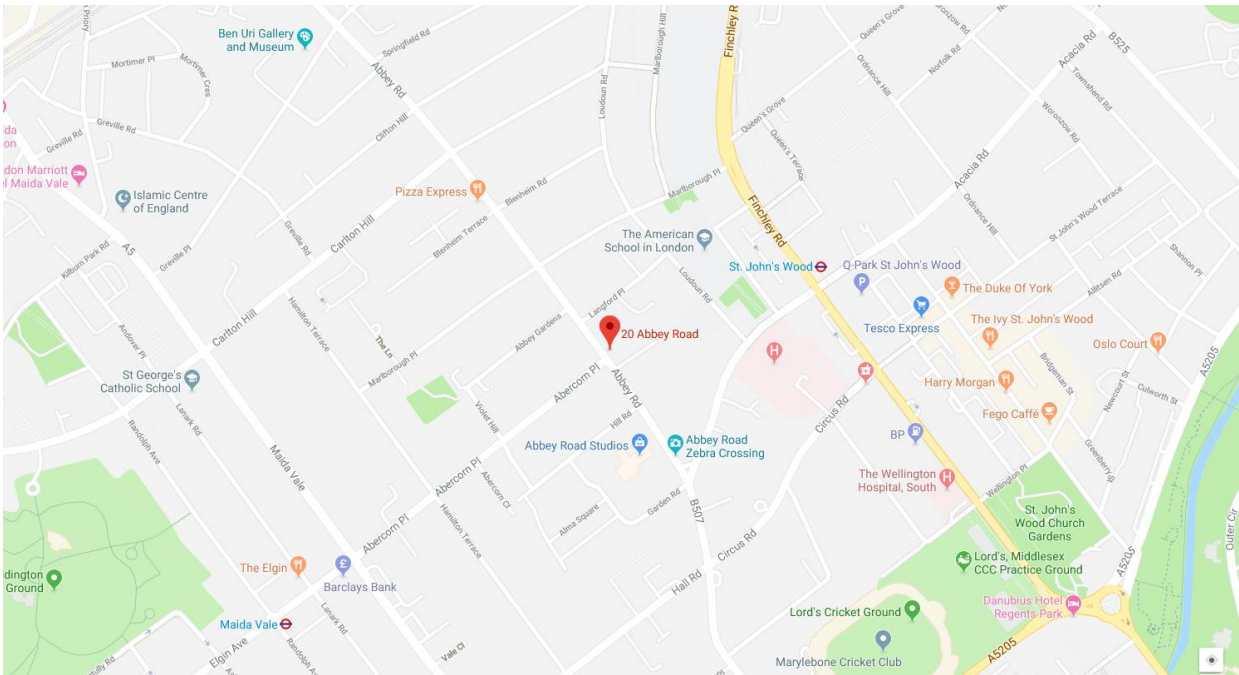
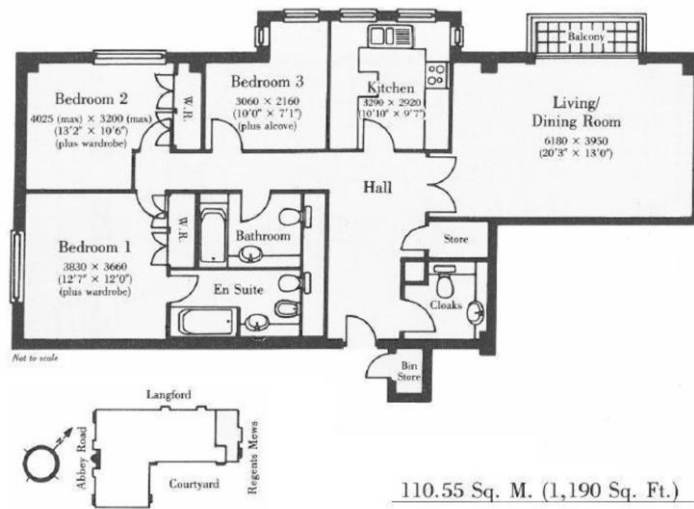
W: www.excel-property.co.uk

JP: www.excel-property.london/JP

A: 146 Finchley Road, London, NW3 5HS



ABBNEY ROAD, ST JOHNS WOOD, LONDON NW8 9BJ



T: 020 7691 9000

E: info@excel-property.co.uk

W: www.excel-property.co.uk

JP: www.excel-property.london/JP

A: 146 Finchley Road, London, NW3 5HS

