

# TOMMY FLOWERS MEWS, MILL HILL EAST, LONDON NW7 1FY



**£495 PW**

**[£2,145 PCM] (FEES APPLY)**

**3 BEDROOM(S)**

**AVAILABLE: AVAILABLE NOW**

Available for long term rental, this modern 3 bedroom end of terrace house, with parking and private garden, in the highly sought after development of Millbrook Park, walking distance from Mill Hill East tube station and a host of excellent schools. EPC: B

- New build development
- End of terrace house
- Spacious reception
- Separate eat-in kitchen
- Master bedroom suite
- 2 further double beds
- Family bathroom/WC
- Guest cloakroom
- Private garden with shed
- Off street parking

**T:** 020 7691 9000

**E:** [info@excel-property.co.uk](mailto:info@excel-property.co.uk)

**W:** [www.excel-property.co.uk](http://www.excel-property.co.uk)

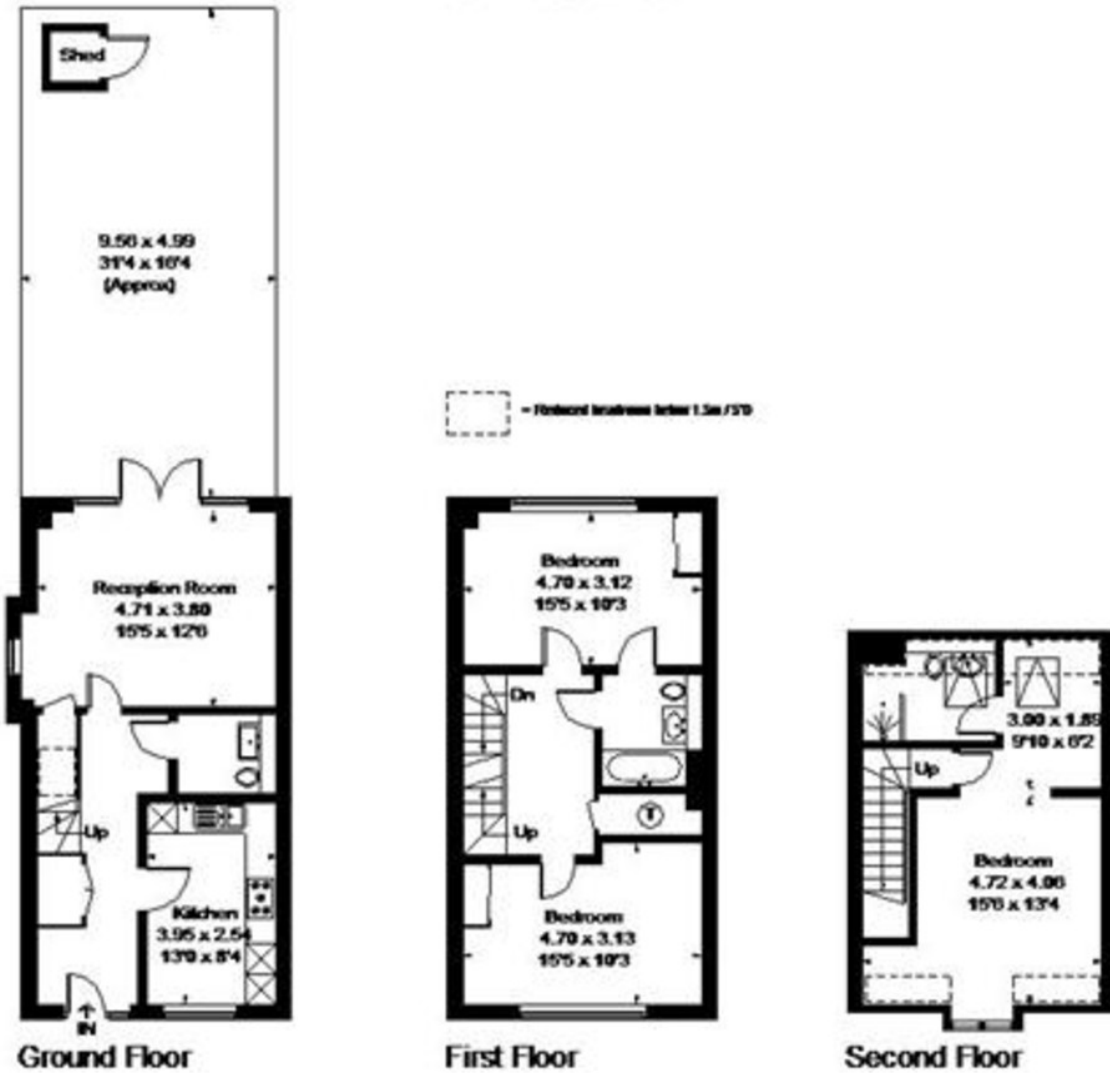
**JP:** [www.excel-property.london/JP](http://www.excel-property.london/JP)

**A:** 146 Finchley Road, London, NW3 5HS



## Millbrook Park, Mill Hill

Approximate Gross Internal Area = 125.5 sq m / 1351 sq ft  
(Excluding Shed)



FLOORPLANZ © 2016 0845 6344000 Ref: 166182

This plan is for layout guidance only. Drawn in accordance with RICS guidelines. Not drawn to scale unless stated. Windows & door openings are approximate. Whilst every care is taken in the preparation of this plan, please check all dimensions, shapes & compass bearings before making any decisions reliant upon them.

T: 020 7691 9000  
E: info@excel-property.co.uk  
W: www.excel-property.co.uk  
JP: www.excel-property.london/JP  
A: 146 Finchley Road, London, NW3 5HS

