

20 ABBEY ROAD, ST JOHNS WOOD, LONDON NW8 9BW



£850 PW

[£3,683.33 PCM] (FEES APPLY)

3 BEDROOM(S)

AVAILABLE: 3RD MARCH 2019

Available for long term rental on a sole agency basis, a spacious 3 bedroom apartment (1421 sq ft; 132 sq m) set on the 11th floor in the iconic development of 20 Abbey Road superbly located to take advantage of everything St Johns Wood has to offer. EPC: C

- Iconic development; 11th fl.
- Approx 1421 sq ft (132 sq m)
- Spacious reception; balcony
- Fully fitted kitchen
- 3 x double bedrooms
- 2 x bathroom/WC's
- Guest cloakroom
- Heated pool for residents
- 24-hour concierge; CCTV
- Underground parking space

T: 020 7691 9000

E: info@excel-property.co.uk

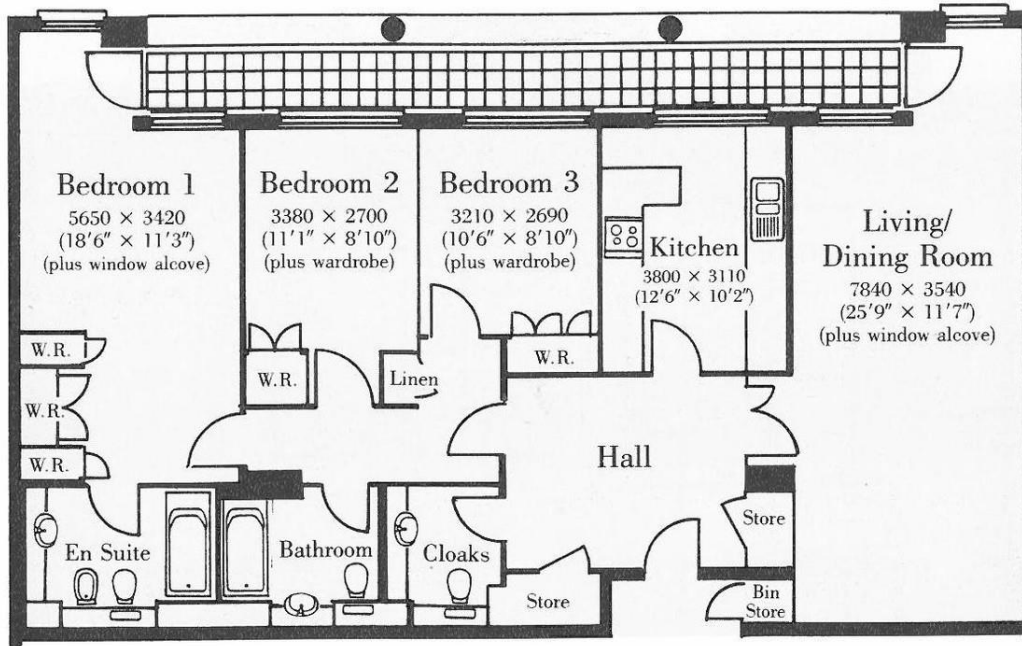
W: www.excel-property.co.uk

JP: www.excel-property.london/JP

A: 146 Finchley Road, London, NW3 5HS

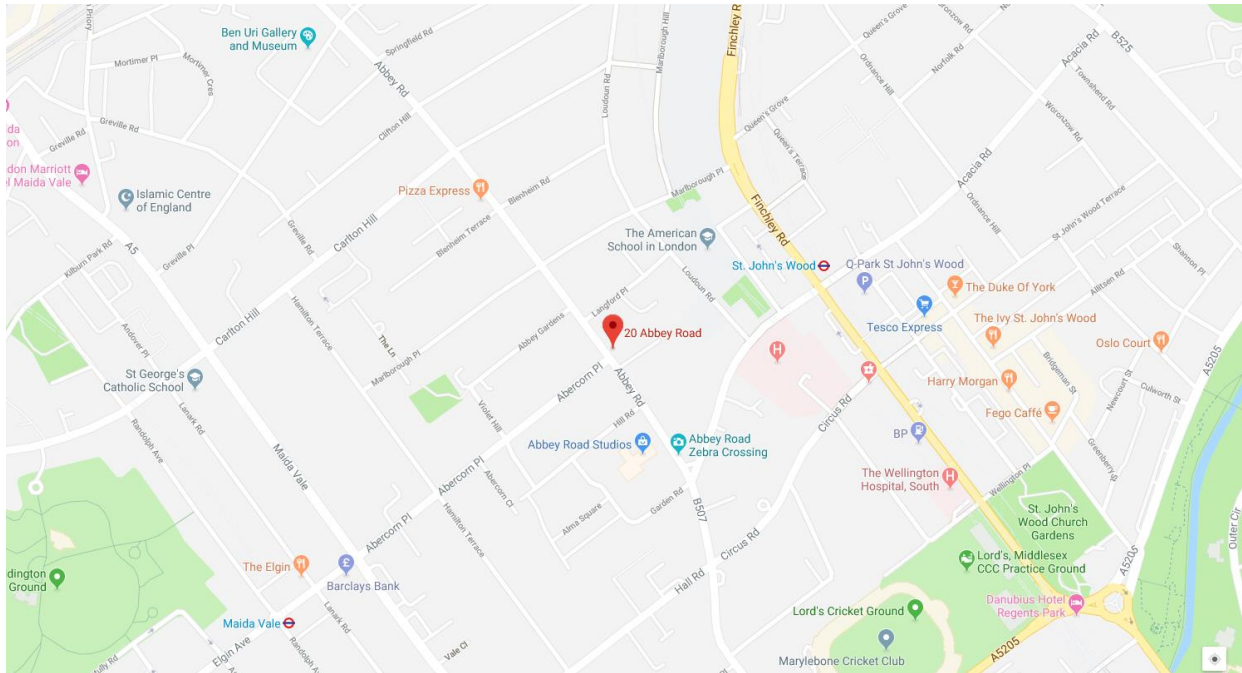
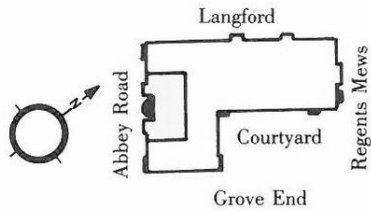


20 ABBEY ROAD, ST JOHNS WOOD, LONDON NW8 9BW



Not to scale

132.10 Sq. M. (1,421 Sq. Ft.)



T: 020 7691 9000

E: info@excel-property.co.uk

W: www.excel-property.co.uk

JP: www.excel-property.london/JP

A: 146 Finchley Road, London, NW3 5HS

