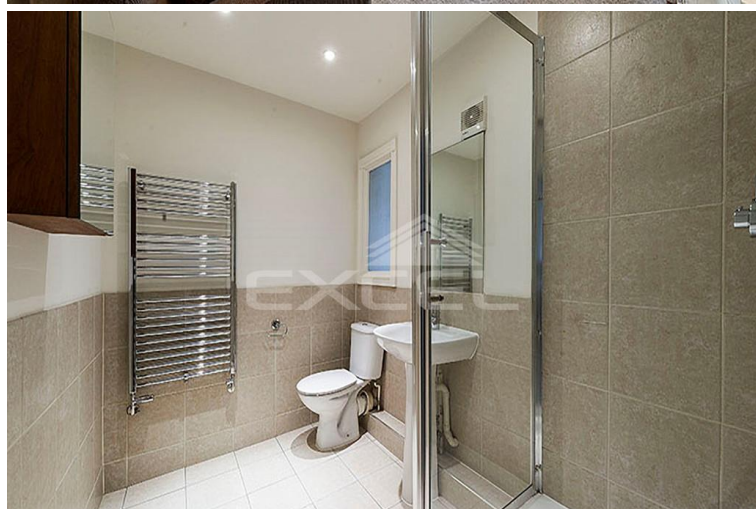
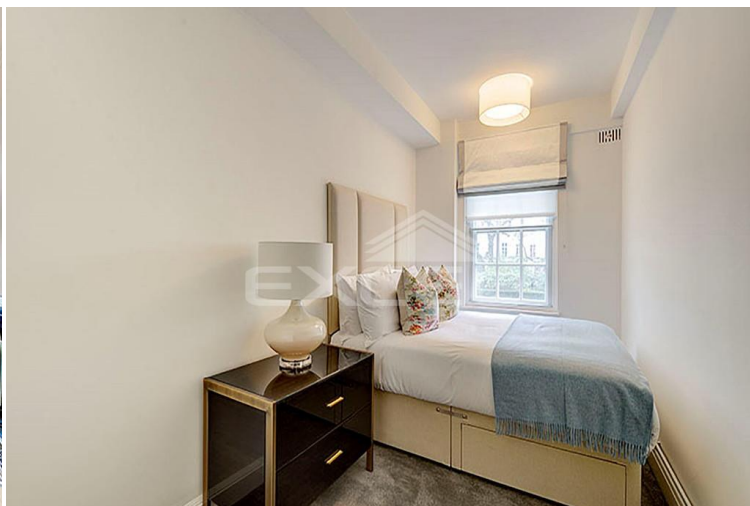


PELHAM COURT, 145 FULHAM ROAD, CHELSEA, SW3 6SH



£915 PW

[£3,965 CM] (FEES APPLY)

2 BEDROOM(S)

AVAILABLE: 1ST MAY 2019

Available for rent a superb 2 bedroom, 2 bathroom first floor apartment in Pelham Court, perfectly located within the heart of Chelsea, moments from the fashionable restaurants and designer shops of South Kensington, Knightsbridge and the Kings Road. EPC: C

- Central Chelsea location
- Portered apartment block
- 1st floor apartment
- Available furnished
- Fully fitted kitchen
- View of gardens
- 2 x double bedrooms
- Fitted wardrobes
- 2 x family bathroom/WCs
- Communal garden

T: 020 7691 9000

E: info@excel-property.co.uk

W: www.excel-property.co.uk

JP: www.excel-property.london/JP

A: 146 Finchley Road, London, NW3 5HS



PELHAM COURT, 145 FULHAM ROAD, CHELSEA, SW3 6SH

22 PELHAM COURT, SW3

APPROX. GROSS INTERNAL AREA *
860 FT² • 79.89 M²

ILLUSTRATION FOR IDENTIFICATION PURPOSES ONLY. NOT TO SCALE
* As Defined by RICS - Code of Measuring Practice



FIRST FLOOR

BKR

www.bkrfloorplans.co.uk
T: 0845 257 2023
© 2019



T: 020 7691 9000

E: info@excel-property.co.uk

W: www.excel-property.co.uk

JP: www.excel-property.london/JP

A: 146 Finchley Road, London, NW3 5HS

