

Cedar House, 39-41 Nottingham Place, Marylebone W1U 5LU



£700 pw
[£3,033.33 pcm] [fees apply]

2 bedroom(s)
Available: Now

Excel Property Services are pleased to offer for rental an excellent two bedroom apartment with private patio set on the lower ground floor of a red brick period building on Nottingham Place in the heart of Marylebone Village, just moments from Marylebone High Street and the open spaces of Regents Park. EPC: D

- Grand red brick building
- Marylebone Village location
- Lower ground floor
- Furnished/Unfurnished
- Fitted kitchen
- Spacious reception room
- 2 x double bedrooms
- Fully tiled bathroom/WC
- Guest cloakroom
- Private patio

T: 020 7691 9000

E: info@excel-property.co.uk

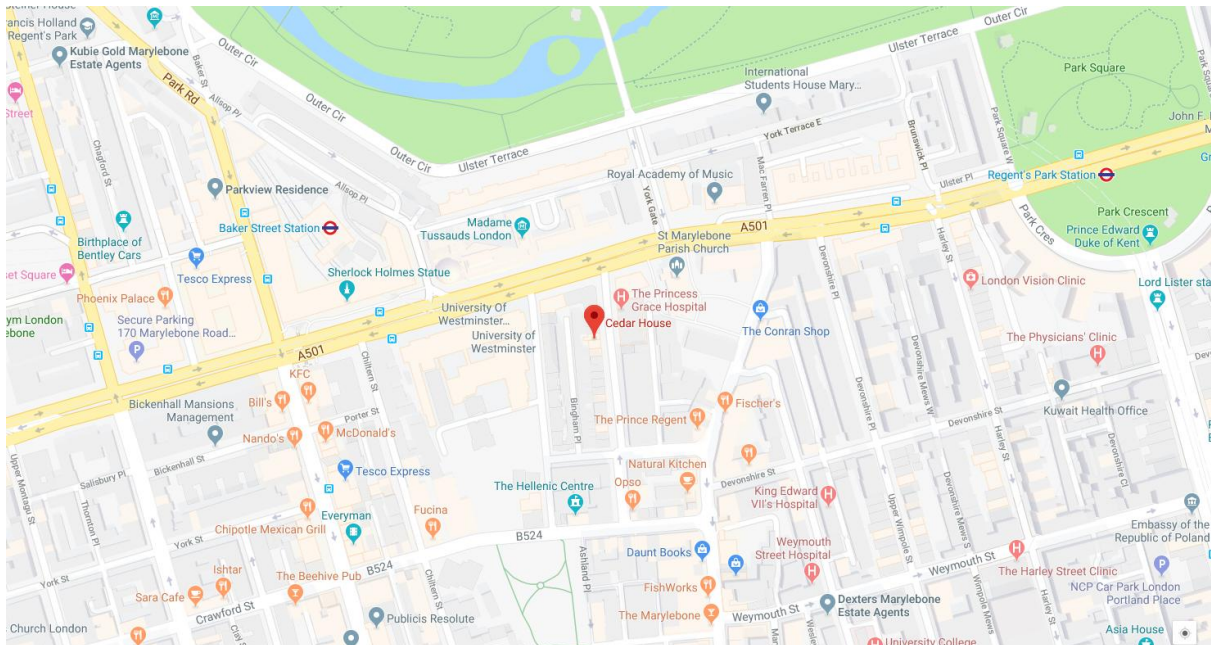
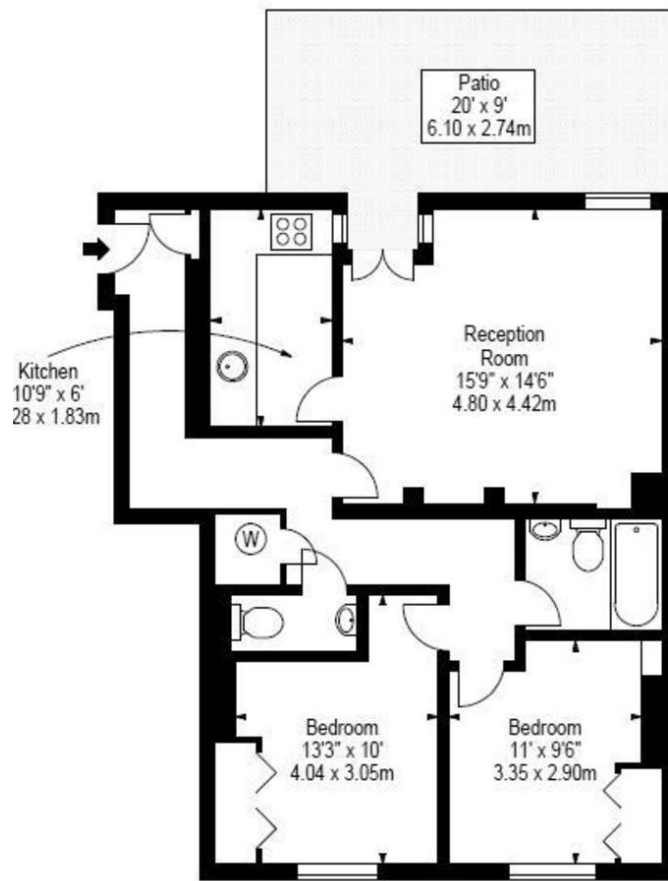
W: www.excel-property.co.uk

JP: www.excel-property.london/JP

A: 146 Finchley Road, London, NW3 5HS



Cedar House, 39-41 Nottingham Place, Marylebone W1U 5LU



T: 020 7691 9000

E: info@excel-property.co.uk

W: www.excel-property.co.uk

JP: www.excel-property.london/JP

A: 146 Finchley Road, London, NW3 5HS

