

# KEW BRIDGE ROAD, BRENTFORD, LONDON TW8 0HT



£1,731 PW

[£7,500.00 PCM]

(FEES APPLY)

3 BEDROOM(S)

AVAILABLE: 15TH APRIL 2020

SPECTACULAR 3 bedroom apartment set on the third floor in the Quayside House at the Kew Bridge development, close to the amenities of Kew. The property enjoys a RIVERSIDE LOCATION, 24 HRS CONCIERGE with UNDERGROUND PARKING. It is a short walk to Kew Bridge National Rail station. EPC: B

- Modern development
- River views
- 3rd floor apartment
- 3 x double bedrooms
- En-suite shower room/WC
- Family bathroom/WC
- Private terrace
- Underground parking
- Residents gym
- Close to Kew Bridge station

T: 020 7691 9000

E: [info@excel-property.co.uk](mailto:info@excel-property.co.uk)

W: [www.excel-property.co.uk](http://www.excel-property.co.uk)

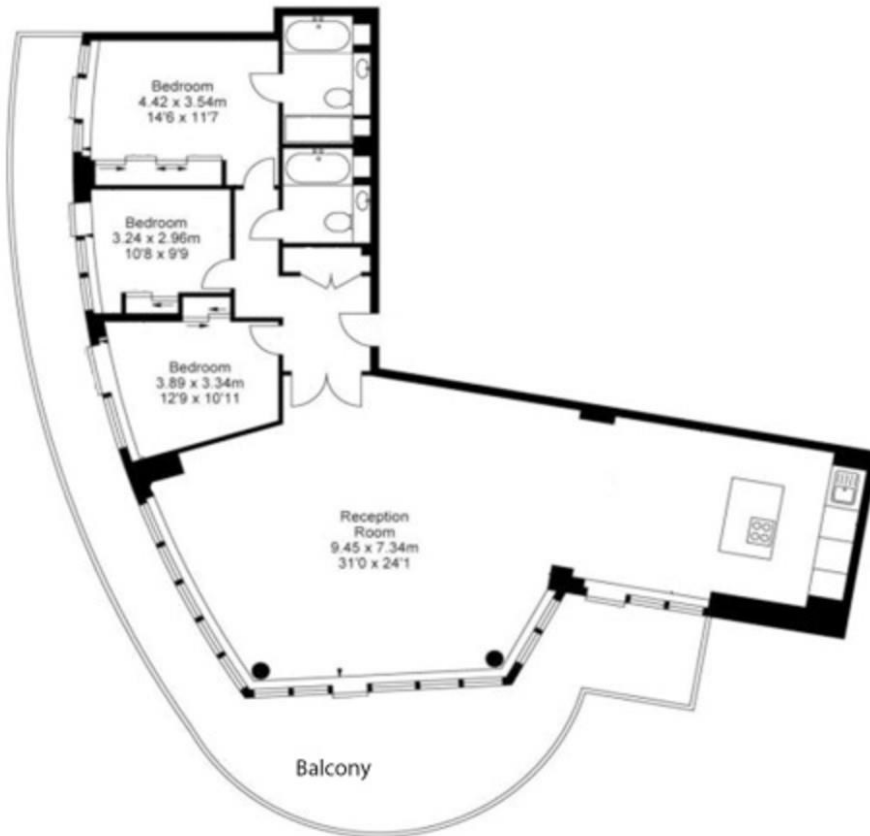
JP: [www.excel-property.london/JP](http://www.excel-property.london/JP)

A: 146 Finchley Road, London, NW3 5HS



# KEW BRIDGE ROAD, BRENTFORD, LONDON TW8 0HT

Approx Gross Area: 148 Sqm / 1600 Sq Ft



Whilst every attempt has been made to ensure the accuracy of the floor plan contained here, measurements of doors, windows, rooms and any other items are approximate and no responsibility is taken for any error, omission, or mis-statement. This plan is for illustrative purposes only and should be used as such by any prospective purchaser. The services, systems and appliances shown have not been tested and no guarantee as to their operability or efficiency can be given  
Made with Metropix ©2016

T: 020 7691 9000

E: [info@excel-property.co.uk](mailto:info@excel-property.co.uk)

W: [www.excel-property.co.uk](http://www.excel-property.co.uk)

JP: [www.excel-property.london/JP](http://www.excel-property.london/JP)

A: 146 Finchley Road, London, NW3 5HS

