



£1,195 PW

[£5,178.33 PCM]

(FEES APPLY)

4 BEDROOM(S)

AVAILABLE: 28TH AUGUST 2022

Available for long term rental, this 4 bedroom apartment (1532 sq ft; 142 sq m) arranged over the 1st and 2nd floors of a grand stucco fronted building, superbly located to take advantage of everything St Johns Wood has to offer. EPC: D

- Stucco fronted building
- Converted duplex
- Set over 1st & 2nd floors
- Furnished/ unfurnished
- Double reception room
- Modern fitted kitchen
- Master bedroom suite
- 3 x further double beds
- Family bathroom/WC
- Guest cloakroom

T: 020 7691 9000

E: info@excel-property.co.uk

W: www.excel-property.co.uk

JP: www.excel-property.london/JP

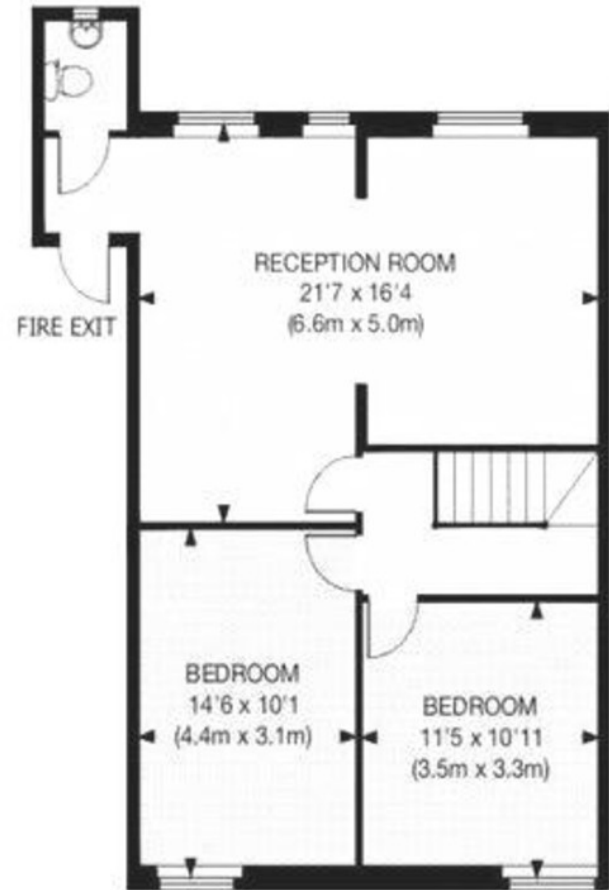
A: 146 Finchley Road, London, NW3 5HS



FINCHLEY ROAD, ST JOHNS WOOD, LONDON, NW8 6EB



FIRST FLOOR



SECOND FLOOR

APPROX. GROSS INTERNAL FLOOR AREA 1532 SQ FT / 142 SQ M

T: 020 7691 9000

E: info@excel-property.co.uk

W: www.excel-property.co.uk

JP: www.excel-property.london/JP

A: 146 Finchley Road, London, NW3 5HS

