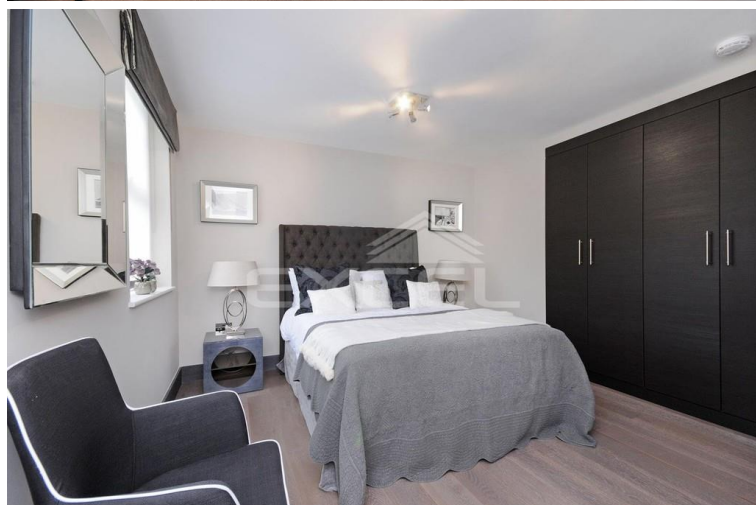


# BOYDELL COURT, ST JOHNS WOOD PARK, LONDON NW8 6NL



**£1,100 PW**

**[£4,762.33 PCM]**

**(FEES APPLY)**

**3 BEDROOM(S)**

**AVAILABLE: 13<sup>TH</sup> SEPTEMBER 2019**

Available for rental, this recently refurbished 1960s purpose built block available for rental inclusive of one parking space. Boydell Court is located to the south east of the Finchley Road and accessed from St Johns Wood Park. EPC: C

- Refurbished 1960s block
- 2nd floor apartment
- Approx 1061 sq ft (99 sq m)
- Bespoke interior designed
- Available furnished or unfurnished
- Air conditioning
- Reception with dining area
- Modern kitchen; Stone w/tops
- 3 x bedrooms
- Fitted wardrobes

**T:** 020 7691 9000

**E:** [info@excel-property.co.uk](mailto:info@excel-property.co.uk)

**W:** [www.excel-property.co.uk](http://www.excel-property.co.uk)

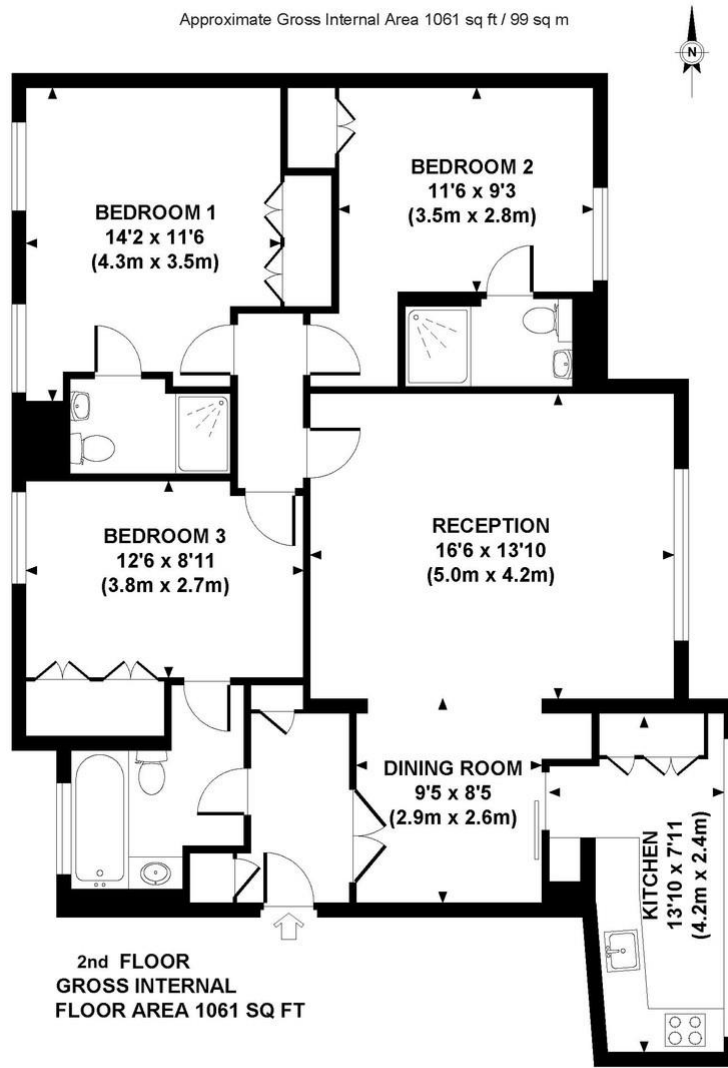
**JP:** [www.excel-property.london/JP](http://www.excel-property.london/JP)

**A:** 146 Finchley Road, London, NW3 5HS

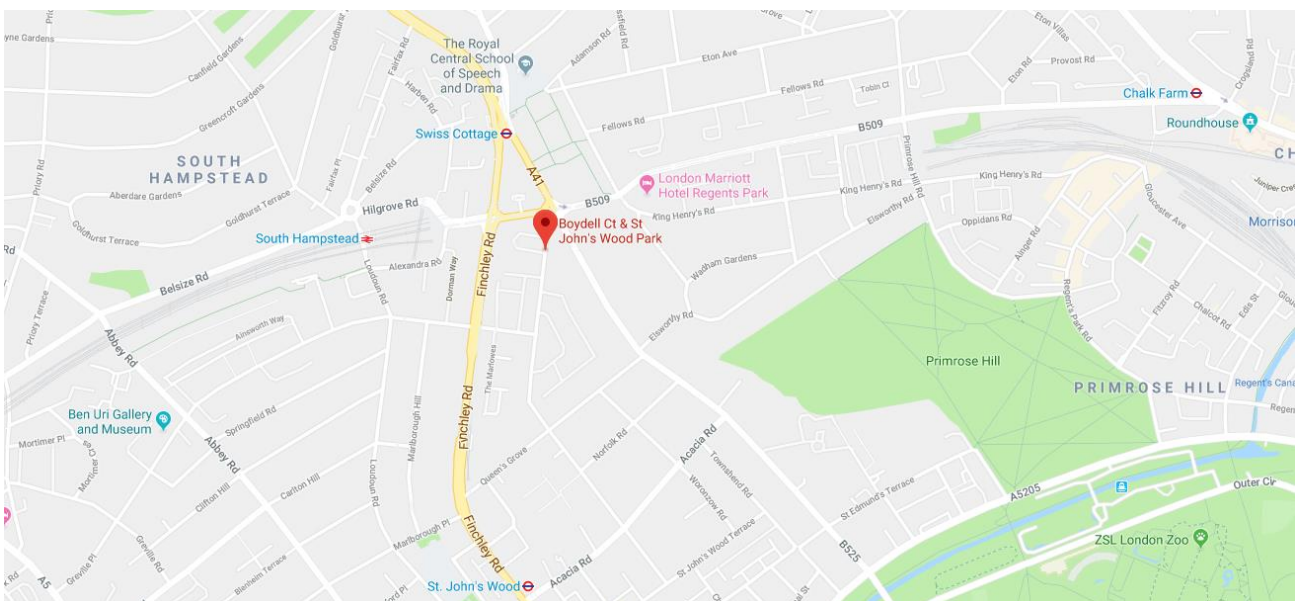


# BOYDELL COURT, ST JOHNS WOOD PARK, LONDON NW8 6NL

Approximate Gross Internal Area 1061 sq ft / 99 sq m



Although every attempt has been made to ensure accuracy, all measurements are approximate.  
The floor plan's for illustrative purposes only and not to scale. Measured in accordance to RICS standards.  
DE-PHOTOGRAPHY.NET



**T:** 020 7691 9000

**E:** [info@excel-property.co.uk](mailto:info@excel-property.co.uk)

**W:** [www.excel-property.co.uk](http://www.excel-property.co.uk)

**JP:** [www.excel-property.london/JP](http://www.excel-property.london/JP)

**A:** 146 Finchley Road, London, NW3 5HS

