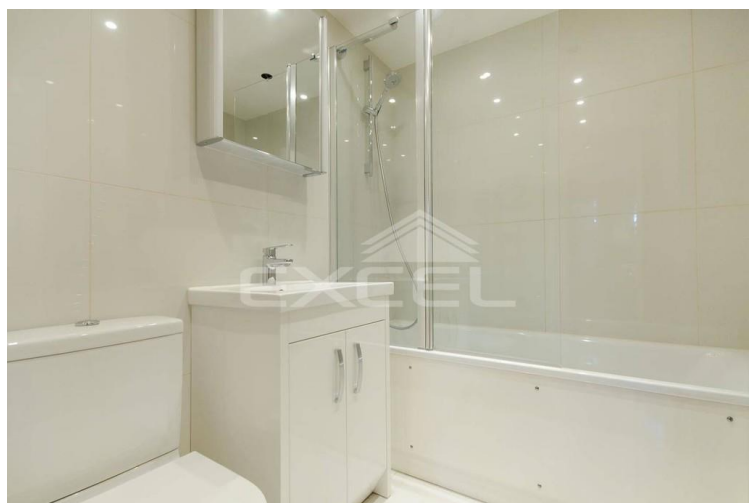
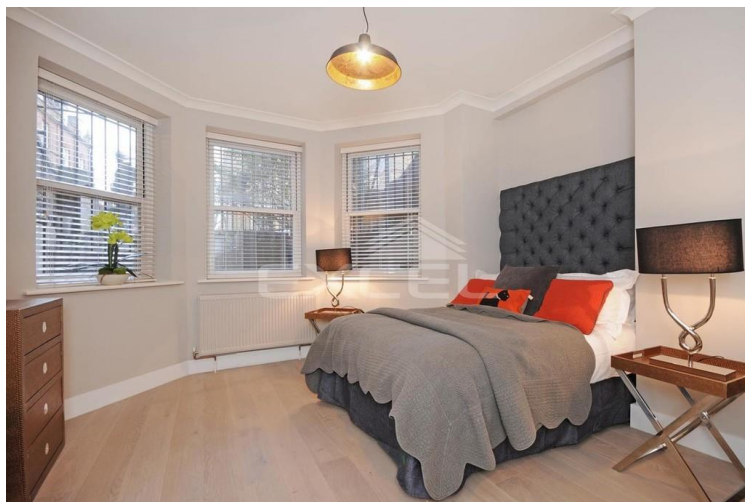


FITZJOHNS AVENUE, HAMPSTEAD, LONDON NW3 6NX



£1,100 PW

[£4,766.66 PCM]

(FEES APPLY)

3 BEDROOM(S)

AVAILABLE: AVAILABLE NOW

Available for rental this spacious 3 bedroom garden flat in a magnificent Victorian building, superbly located in the heart of Hampstead, moments from the High Street, the underground station and the green open spaces of Hampstead Heath. EPC: E

- Period conversion
- Garden flat
- Furnished or unfurnished
- Approx 1037 sq ft (96.3 sq m)
- Spacious reception
- Modern fitted kitchen
- Master bedroom suite
- 2 x extra bedrooms
- Family bathroom/WC; Guest WC
- Private rear garden

T: 020 7691 9000

E: info@excel-property.co.uk

W: www.excel-property.co.uk

JP: www.excel-property.london/JP

A: 146 Finchley Road, London, NW3 5HS



FITZJOHNS AVENUE, HAMPSTEAD, LONDON NW3 6NX

FITZJOHNS AVENUE
Approximate Gross Internal Area 1037 sq ft / 96.3 sq m



LOWER GROUND FLOOR
GROSS INTERNAL
FLOOR AREA 1037 SQ FT

Although every attempt has been made to ensure accuracy, all measurements are approximate.
The floor plan's for illustrative purposes only and not to scale. Measured in accordance to RICS standards.
DE-PHOTOGRAPHY.NET

T: 020 7691 9000
E: info@excel-property.co.uk
W: www.excel-property.co.uk
JP: www.excel-property.london/JP
A: 146 Finchley Road, London, NW3 5HS

