

STRATHMORE COURT, 143 PARK ROAD, ST JOHNS WOOD NW8 7HY



£1,725 PW

[£7,475 PCM] (FEES APPLY)

5 BEDROOM(S)

AVAILABLE: NOW

Available for long term rental a spacious 5 bedroom lateral apartment set on the 1st floor of Strathmore Court, a prime residential portered apartment building superbly located directly opposite the entrance to Regents Park on Park Road. EPC: C

- Purpose built block
- 1st floor apartment
- Furnished or unfurnished
- Spacious double reception
- Separate fitted kitchen
- 5 x double bedrooms
- 2 x family bathroom/WCs
- Guest cloakroom
- Ample built in storage
- Daytime porters

T: 020 7691 9000

E: info@excel-property.co.uk

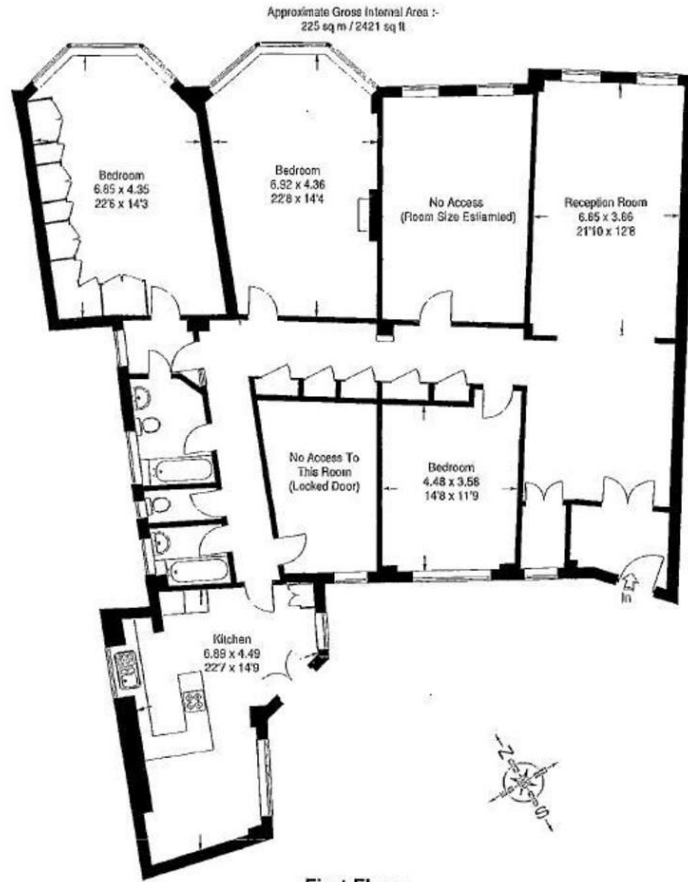
W: www.excel-property.co.uk

JP: www.excel-property.london/JP

A: 146 Finchley Road, London, NW3 5HS



STRATHMORE COURT, 143 PARK ROAD, ST JOHNS WOOD NW8 7HY

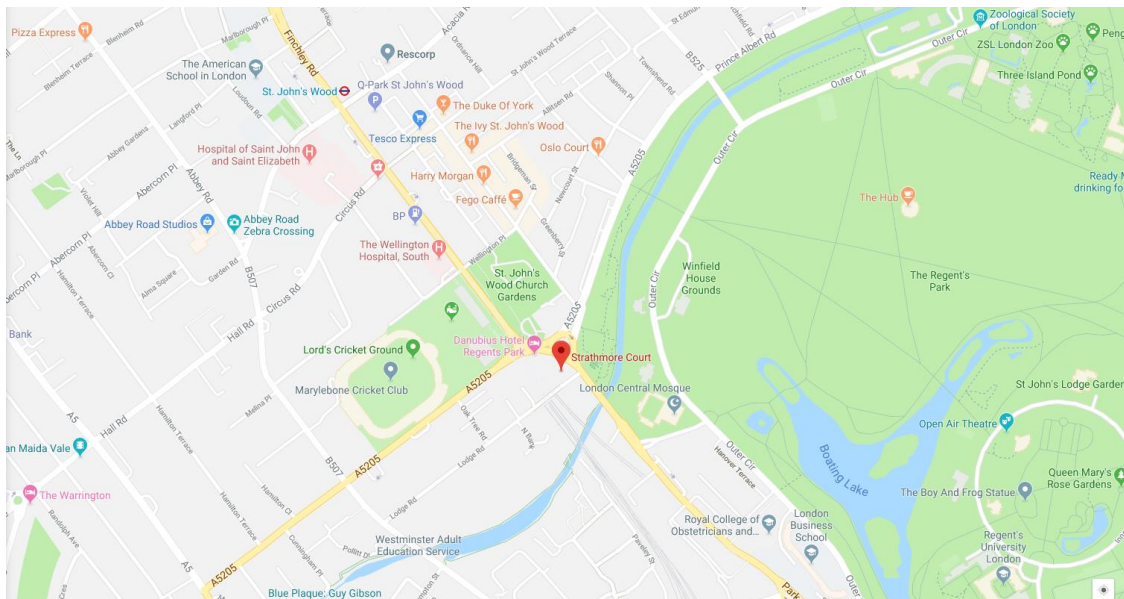


First Floor

FLOORPLAN © 2008

01483 755510 Ref: 38980

This illustration is for identification purposes only. Measured & drawn in accordance with RICS / PMA guidelines. Not drawn to scale, unless stated. Dimensions shown are in the nearest 7.5 cm / 3" and are through cupboard / wardrobe to wall and doors where possible or where indicated by arrow heads. Whilst every care is taken in the preparation of this plan, please check all dimensions, shapes & compare readings before making any decisions relating upon them.



T: 020 7691 9000

E: info@excel-property.co.uk

W: www.excel-property.co.uk

JP: www.excel-property.london/JP

A: 146 Finchley Road, London, NW3 5HS

