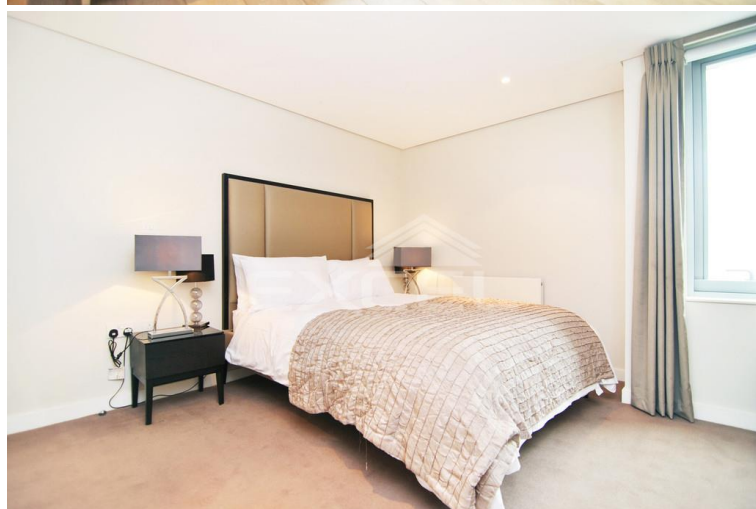


4B MERCHANT SQUARE EAST, HARBET ROAD, PADDINGTON W2 1AP



£1,550 PW

[£6,716.66 PCM] [FEES APPLY]

3 BEDROOM(S)

AVAILABLE: NOW

Stunning 3 bedroom interior designed apartment with south facing balcony overlooking the Grand Union Canal, set on the 14th floor in the Merchant Square development, located within Paddington Basin, minutes from the transport links of Edgware Road. EPC: B

- Merchant Sq. development
- Next to Grand Union Canal
- 14th floor apartment
- South facing balcony
- Dual aspect reception
- Modern open plan kitchen
- 3 x double bedrooms
- 2 x bathroom/WC's
- 24-hour concierge
- Secure underground parking

T: 020 7691 9000

E: info@excel-property.co.uk

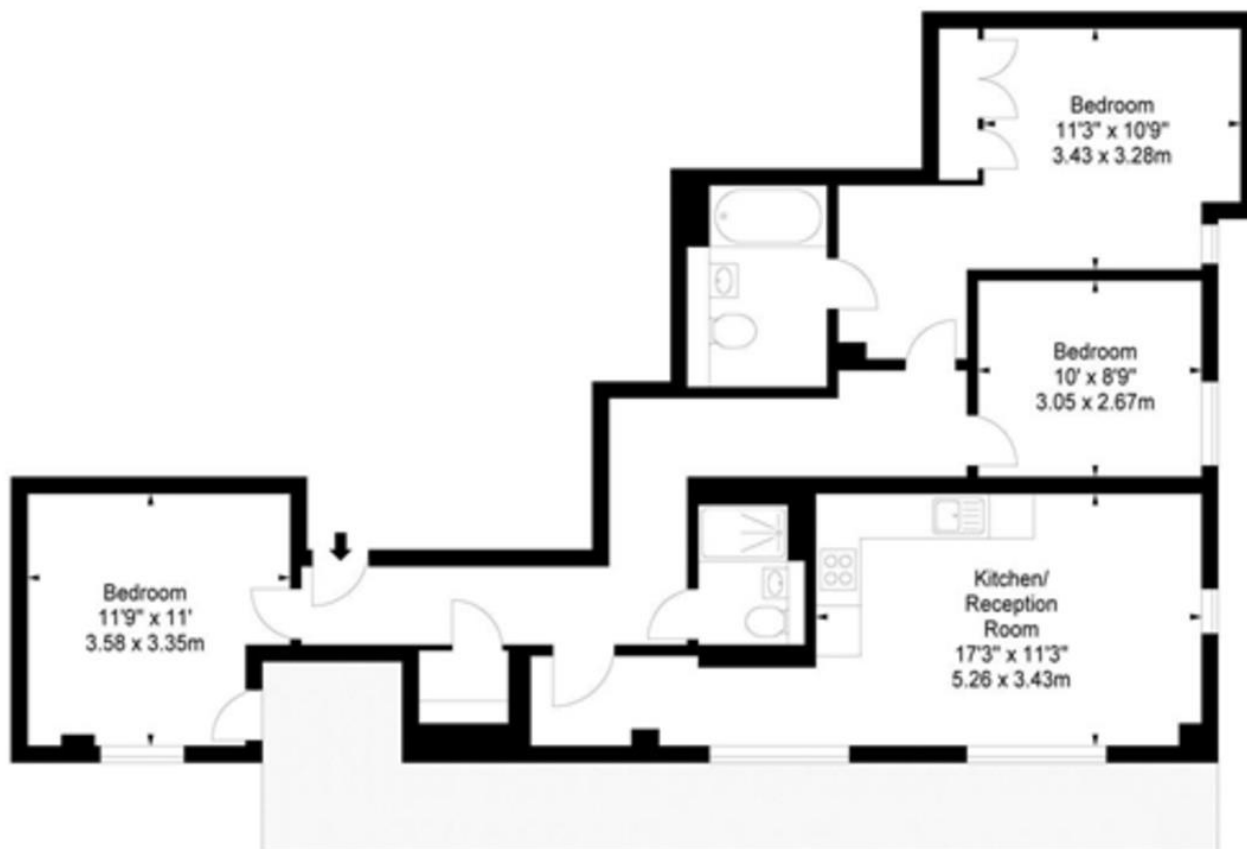
W: www.excel-property.co.uk

JP: www.excel-property.london/JP

A: 146 Finchley Road, London, NW3 5HS



4B MERCHANT SQUARE EAST, HARBET ROAD, PADDINGTON W2 1AP



T: 020 7691 9000

E: info@excel-property.co.uk

W: www.excel-property.co.uk

JP: www.excel-property.london/JP

A: 146 Finchley Road, London, NW3 5HS

