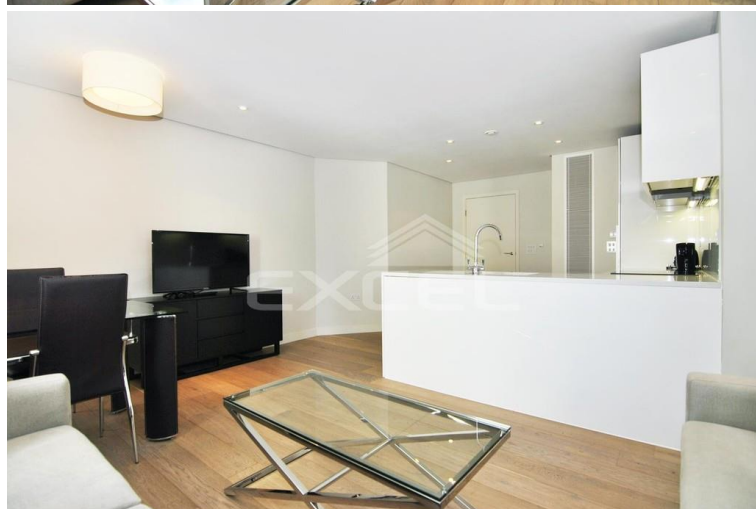


# MERCHANT SQUARE EAST, HARBET ROAD, PADDINGTON, W2 1AP



**£1,470 PW**

**[£6,370 PCM] (FEES APPLY)**

**3 BEDROOM(S)**

**AVAILABLE: 10TH JUNE 2019**

Available for rental, a stunning interior designed 3-double bedroom apartment, set on the 13th floor in the Merchant Square development superbly located within Paddington Basin, minutes from Connaught Village, the green open spaces of Hyde Park and the transport links of Edgware Road. EPC: B

- Merchant Sq. development
- Next to Grand Union Canal
- 13th floor apartment
- South facing reception
- Modern open plan kitchen
- 3 x double bedrooms
- En-suite shower room/WC
- Luxurious bathroom/WC
- 24-hour concierge
- Underground parking

**T:** 020 7691 9000

**E:** [info@excel-property.co.uk](mailto:info@excel-property.co.uk)

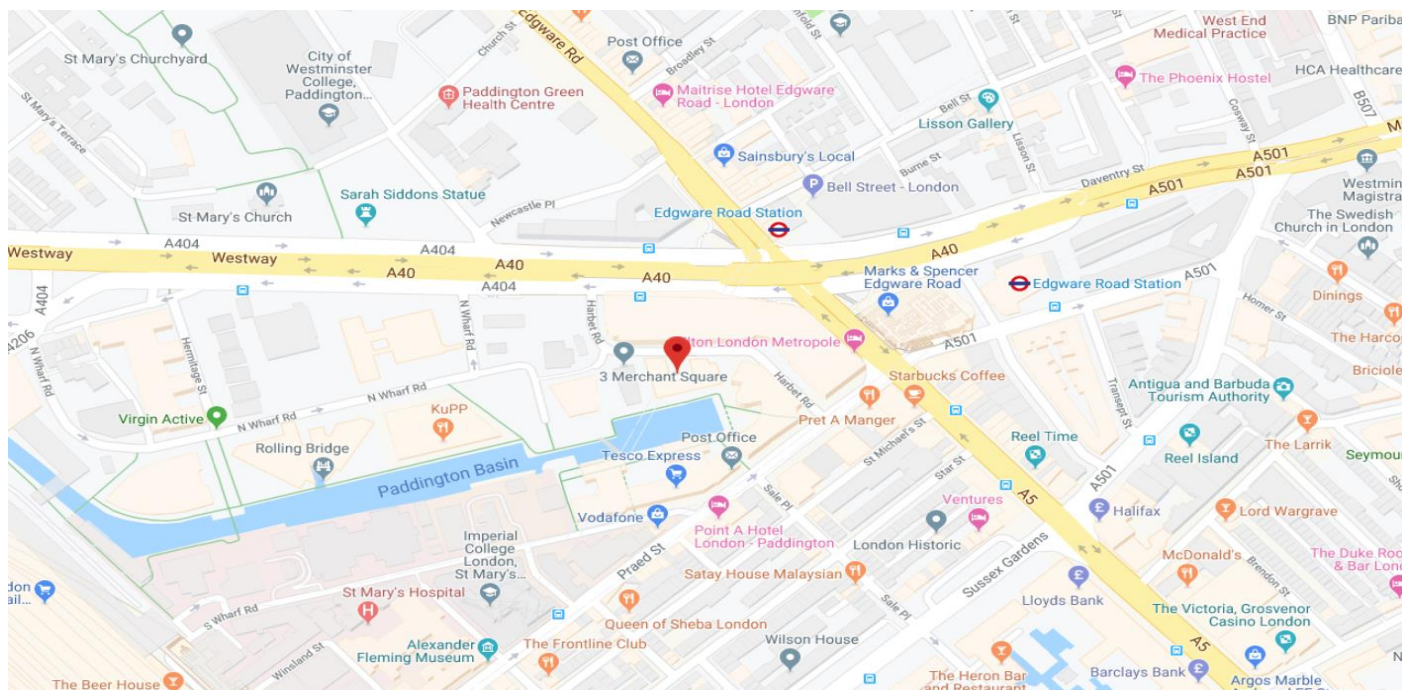
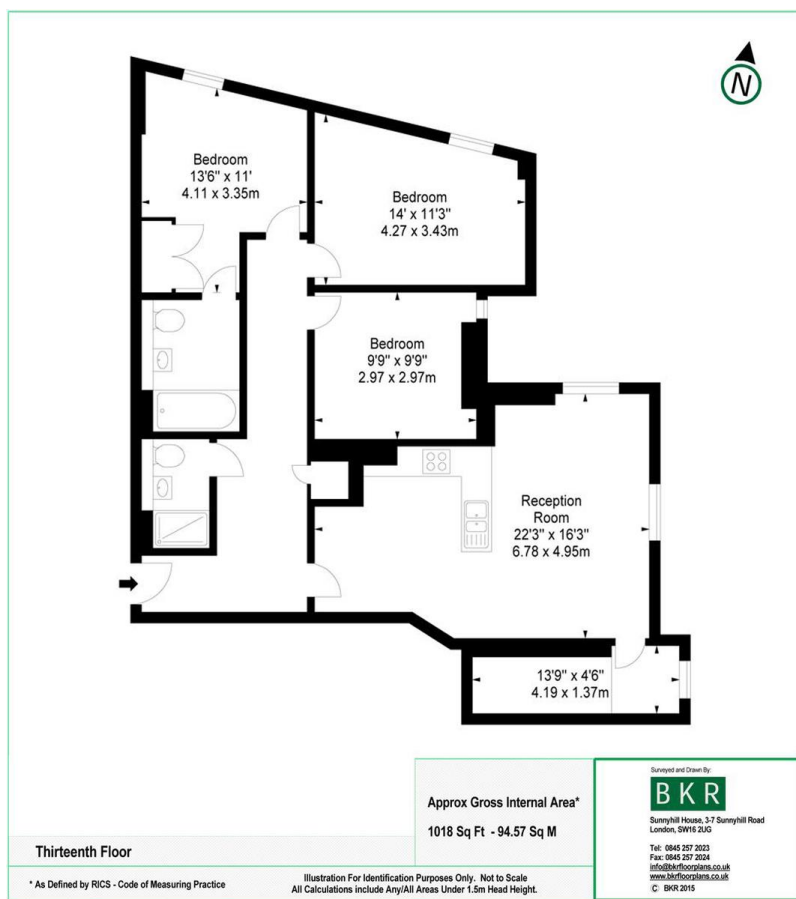
**W:** [www.excel-property.co.uk](http://www.excel-property.co.uk)

**JP:** [www.excel-property.london/JP](http://www.excel-property.london/JP)

**A:** 146 Finchley Road, London, NW3 5HS



# MERCHANT SQUARE EAST, HARBET ROAD, PADDINGTON, W2 1AP



T: 020 7691 9000

E: [info@excel-property.co.uk](mailto:info@excel-property.co.uk)

W: [www.excel-property.co.uk](http://www.excel-property.co.uk)

JP: [www.excel-property.london/JP](http://www.excel-property.london/JP)

A: 146 Finchley Road, London, NW3 5HS

