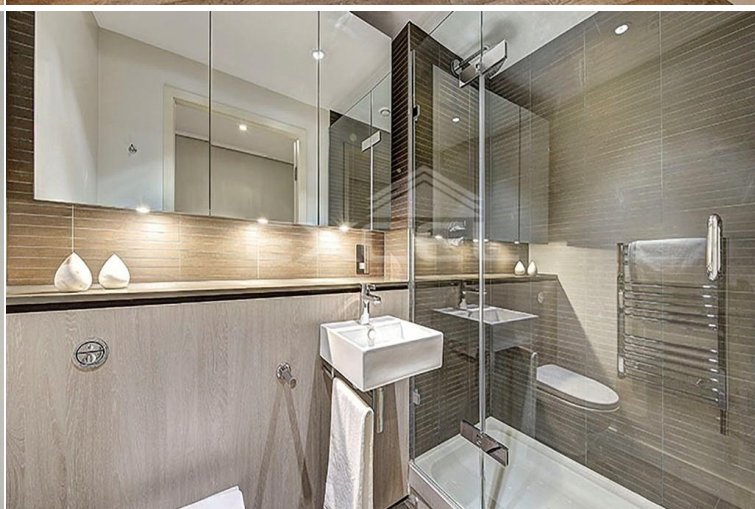
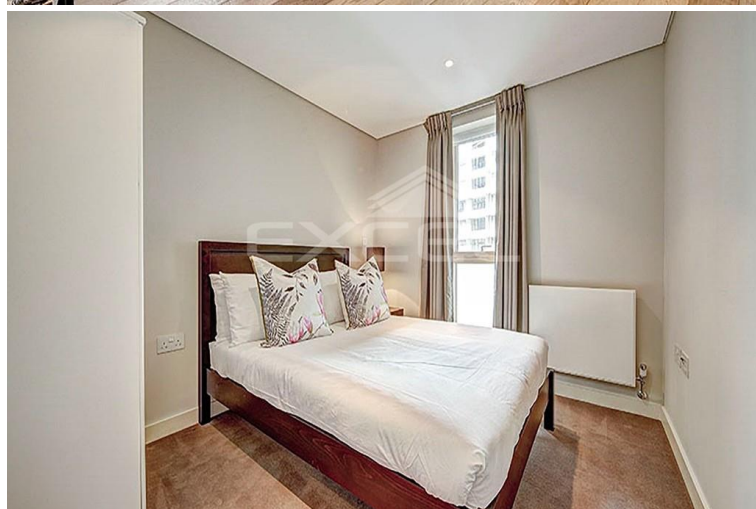


MERCHANT SQUARE EAST, HARBET ROAD, PADDINGTON, W2 1AP



£810 PW

[£3,510 PCM] (FEES APPLY)

2 BEDROOM(S)

AVAILABLE: 22ND MAY 2019

Interior designed 2-double bedroom apartment overlooking the Grand Union Canal on the 10th floor, with stunning views across London's skyline. Set in the Merchant Square development superbly located within Paddington Basin, minutes from Hyde Park. EPC: TBC

- Merchant Sq. development
- Next to Grand Union Canal
- 10th floor apartment
- South facing reception
- Modern open plan kitchen
- 2 x double bedrooms
- En-suite shower room/WC
- Luxurious bathroom/WC
- 24-hour concierge
- Underground parking

T: 020 7691 9000

E: info@excel-property.co.uk

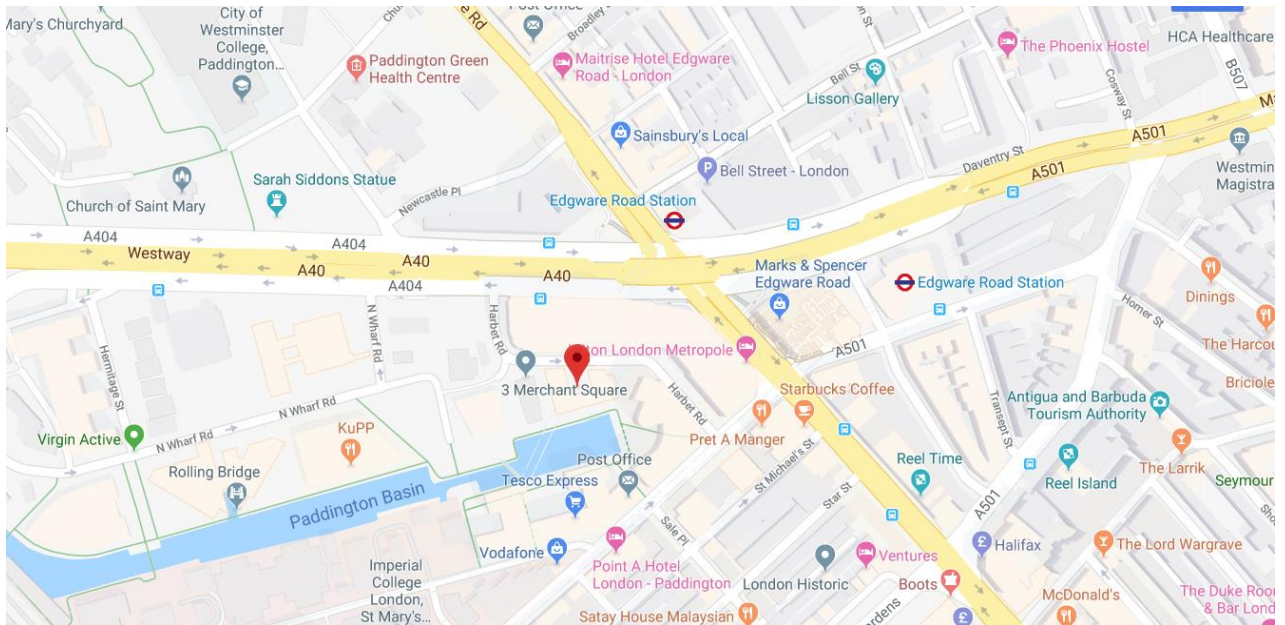
W: www.excel-property.co.uk

JP: www.excel-property.london/JP

A: 146 Finchley Road, London, NW3 5HS



MERCHANT SQUARE EAST, HARBET ROAD, PADDINGTON, W2 1AP



T: 020 7691 9000

E: info@excel-property.co.uk

W: www.excel-property.co.uk

JP: www.excel-property.london/JP

A: 146 Finchley Road, London, NW3 5HS

