

# MERCHANT SQUARE EAST, HARBET ROAD, PADDINGTON, W2 1AN



**£1,150 PW**

**[£4,983.33 PCM]**

**[FEES APPLY]**

**3 BEDROOM(S)**

**AVAILABLE: NOW**

Stunning, interior designed 3-double bedroom apartment on the 2nd floor of Merchant Square, superbly located within Paddington Basin adjacent to the Grand Union Canal, located minutes from the transport links of Edgware Road and Paddington stations. EPC: B

- Merchant Sq. development
- Next to Grand Union Canal
- Second floor apartment
- Furnished/unfurnished
- Reception with bay window
- Modern open plan kitchen
- 3 x double bedrooms
- 2 x bathroom/WC's
- 24-hour concierge
- Secure underground parking

**T:** 020 7691 9000

**E:** [info@excel-property.co.uk](mailto:info@excel-property.co.uk)

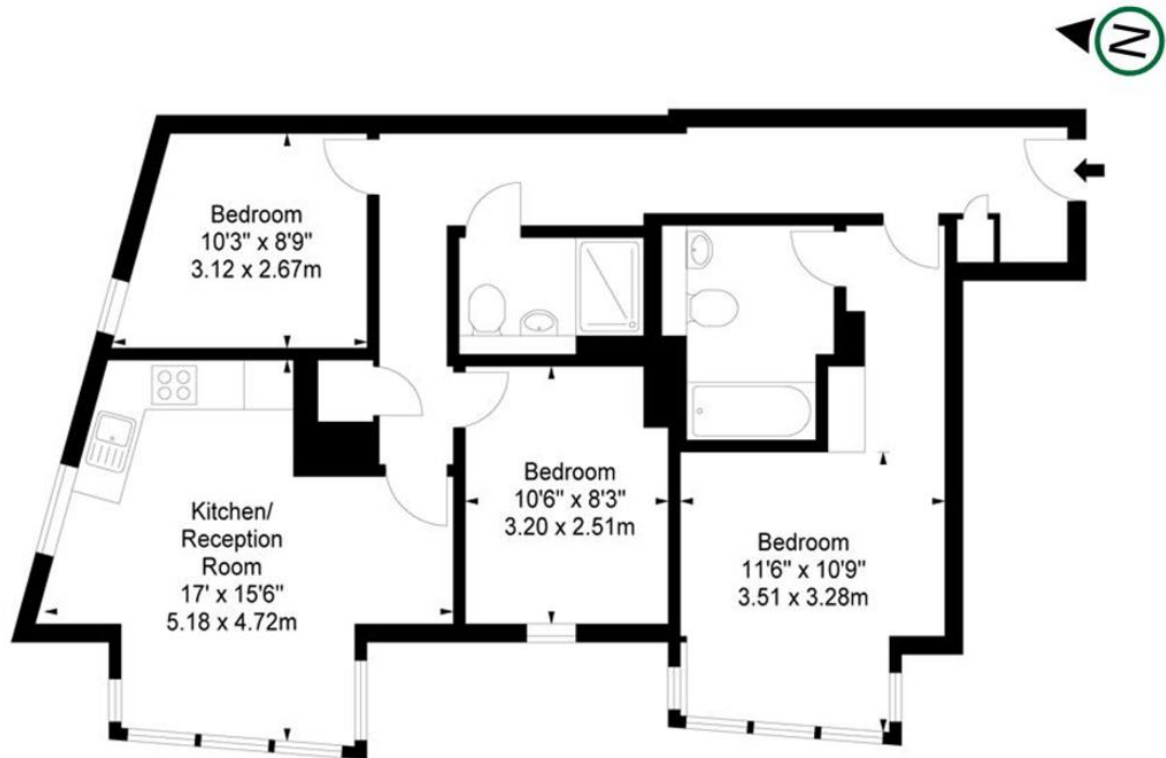
**W:** [www.excel-property.co.uk](http://www.excel-property.co.uk)

**JP:** [www.excel-property.london/JP](http://www.excel-property.london/JP)

**A:** 146 Finchley Road, London, NW3 5HS



# MERCHANT SQUARE EAST, HARBET ROAD, PADDINGTON, W2 1AN



Second Floor

Approx Gross Internal Area\*

794 Sq Ft - 73.76 Sq M

Surveyed and Drawn By:

**BKR**

Sunnyhill House, 3-7 Sunnyhill Road  
London, SW16 2UG

Tel: 0845 257 2023  
Fax: 0845 257 2024  
info@bkrfloorplans.co.uk  
www.bkrfloorplans.co.uk  
© BKR 2015

\* As Defined by RICS - Code of Measuring Practice

Illustration For Identification Purposes Only. Not to Scale  
All Calculations include Any/All Areas Under 1.5m Head Height.

T: 020 7691 9000

E: info@excel-property.co.uk

W: www.excel-property.co.uk

JP: www.excel-property.london/JP

A: 146 Finchley Road, London, NW3 5HS

**EXCEL**