

# PALACE WHARF, RAINVILLE ROAD, HAMMERSMITH W6 9UF



**£860 PW**

**[£3,726.66 PCM]**

**[FEES APPLY]**

**2 BEDROOM(S)**

**AVAILABLE: NOW**

Available for rental a spacious, recently refurbished 2 bedroom apartment (712 sq ft; 66 sq m) set on the 1st floor of Palace Wharf Apartments, a stunning warehouse conversion set within a gated development on the banks of the River Thames. Energy Efficiency Rating D. x

- Newly converted warehouse
- Gated development
- First floor apartment
- Recently refurbished
- Spacious reception
- Open plan kitchen
- 2x double bedrooms
- 2x bathroom/WC's
- Smart home technology
- Dedicated building manager

**T:** 020 7691 9000

**E:** [info@excel-property.co.uk](mailto:info@excel-property.co.uk)

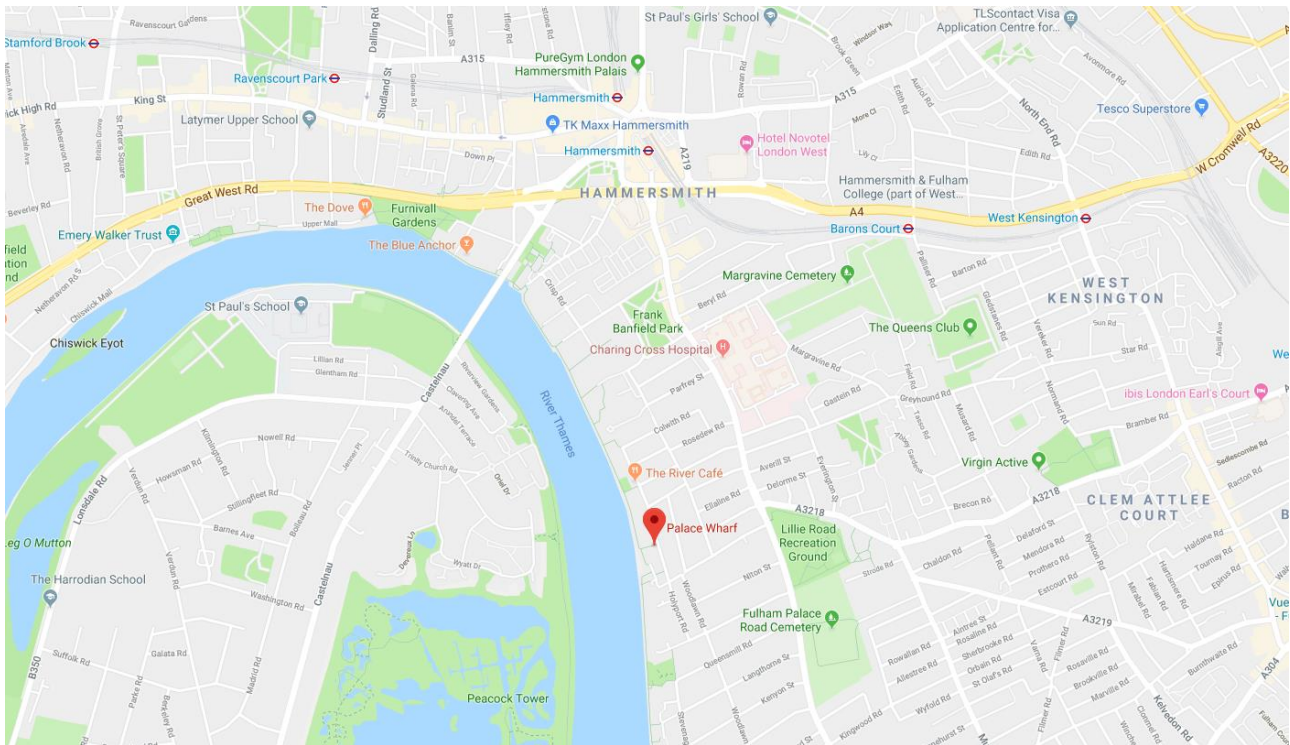
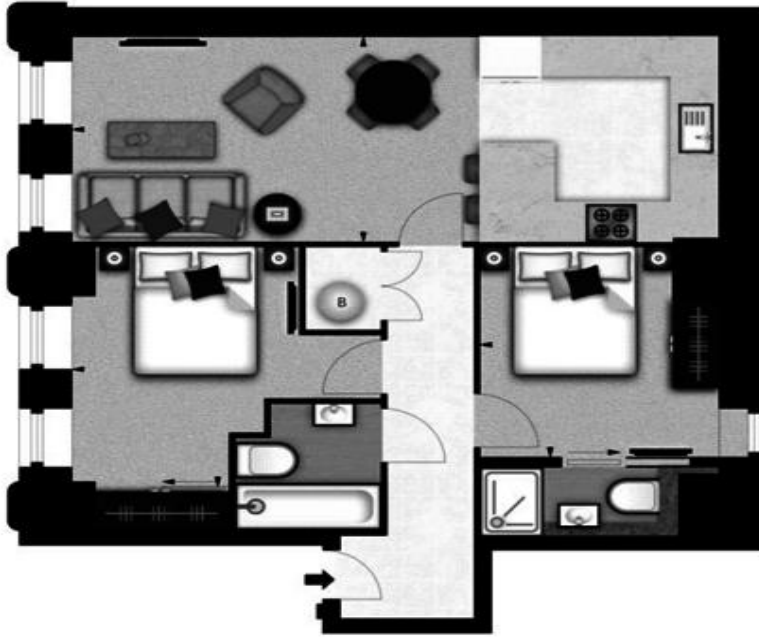
**W:** [www.excel-property.co.uk](http://www.excel-property.co.uk)

**JP:** [www.excel-property.london/JP](http://www.excel-property.london/JP)

**A:** 146 Finchley Road, London, NW3 5HS



# PALACE WHARF, RAINVILLE ROAD, HAMMERSMITH W6 9UF



**T:** 020 7691 9000

**E:** [info@excel-property.co.uk](mailto:info@excel-property.co.uk)

**W:** [www.excel-property.co.uk](http://www.excel-property.co.uk)

**JP:** [www.excel-property.london/JP](http://www.excel-property.london/JP)

**A:** 146 Finchley Road, London, NW3 5HS

