

Merchant Square East, Harbet Road Paddington, W2 1AN



£1,495 pw
[£6,478.33 pcm] [fees apply]

3 bedroom(s)
Available: Available Now

Stunning 3-double bedroom apartment on the 5th floor of the Merchant Square development, superbly located within Paddington Basin adjacent to the Grand Union Canal, located minutes the transport links of Edgware Road and Paddington stations. EPC: B

- Merchant Sq. development
- Stunning water views
- 5th floor apartment
- Furnished/unfurnished
- Spacious living/dining space
- Modern open plan kitchen
- 3 x double bedrooms
- 2 x bathroom/WC's
- 24-hour concierge
- Secure underground parking

T: 020 7691 9000

E: info@excel-property.co.uk

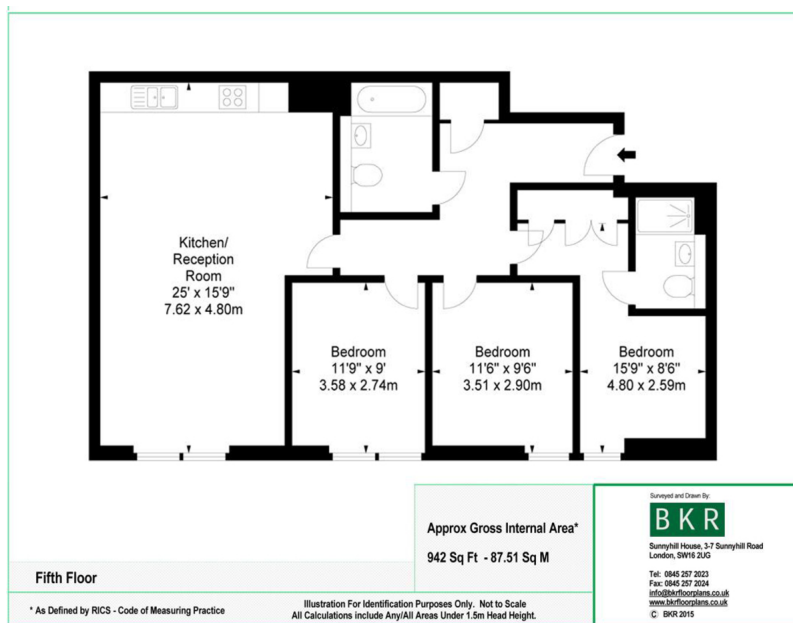
W: www.excel-property.co.uk

JP: www.excel-property.london/JP

A: 146 Finchley Road, London, NW3 5HS



Merchant Square East, Harbet Road Paddington, W2 1AN



T: 020 7691 9000

E: info@excel-property.co.uk

W: www.excel-property.co.uk

JP: www.excel-property.london/JP

A: 146 Finchley Road, London, NW3 5HS

