

# Gloucester Terrace, Paddington, London W2 6HP



£370 PW

[£1,603.33 pcm] [fees apply]

1 bedroom(s)

Available: 22nd March 2021

Available furnished on a sole agency basis for long term rental, a 1-bedroom interior designed apartment on the raised ground floor of a Grade II listed building set in a classic Victorian white stucco-fronted terrace, on the corner of Gloucester Terrace. EPC: D

- Grade II Listed
- End of Victorian terrace
- White stucco fronted
- Recently refurbished building
- Raised ground floor
- Available furnished
- Double aspect reception
- Modern open-plan kitchen
- Double bedroom
- Fully tiled bathroom/WC

T: 020 7691 9000

E: [info@excel-property.co.uk](mailto:info@excel-property.co.uk)

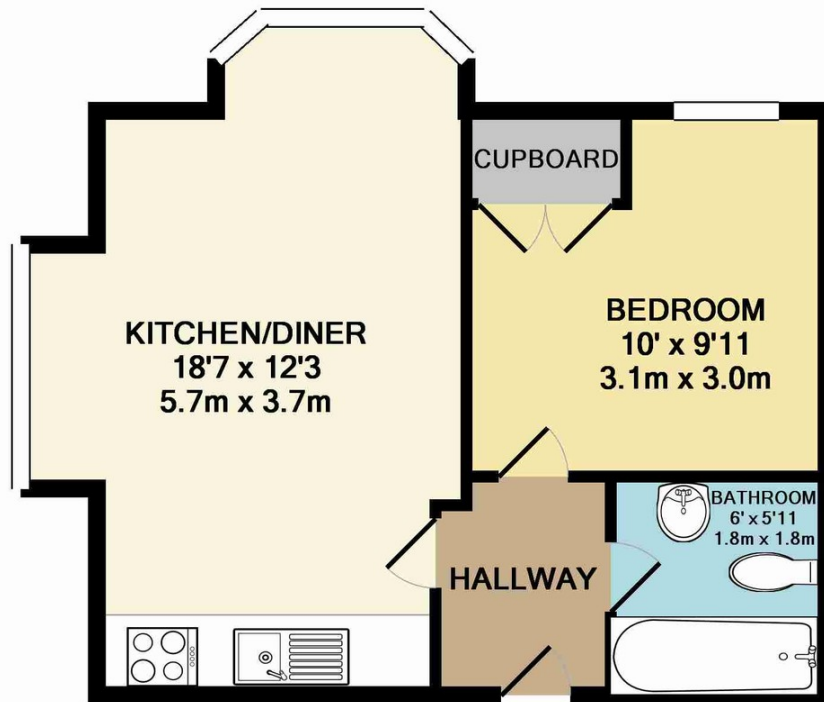
W: [www.excel-property.co.uk](http://www.excel-property.co.uk)

JP: [www.excel-property.london/JP](http://www.excel-property.london/JP)

A: 146 Finchley Road, London, NW3 5HS



# Gloucester Terrace, Paddington, London W2 6HP



TOTAL APPROX. FLOOR AREA 352 SQ.FT. (32.7 SQ.M.)

Whilst every attempt has been made to ensure the accuracy of the floor plan contained here, measurements of doors, windows, rooms and any other items are approximate and no responsibility is taken for any error, omission, or mis-statement. This plan is for illustrative purposes only and should be used as such by any prospective purchaser. The services, systems and appliances shown have not been tested and no guarantee as to their operability or efficiency can be given

Made with Metropix ©2016

**T:** 020 7691 9000

**E:** [info@excel-property.co.uk](mailto:info@excel-property.co.uk)

**W:** [www.excel-property.co.uk](http://www.excel-property.co.uk)

**JP:** [www.excel-property.london/JP](http://www.excel-property.london/JP)

**A:** 146 Finchley Road, London, NW3 5HS

