

PALACE WHARF APARTMENTS, RAINVILLE ROAD, HAMMERSMITH, LONDON, W6



£1,180 PW

[£5,113.33 PCM] (FEES APPLY)

2 BEDROOM(S)

AVAILABLE: NOW

Available for rental a spacious, recently refurbished 2 bedroom apartment (859 sq ft; 79.80 sq m) set on the ground floor of Palace Wharf Apartments, a stunning new warehouse conversion set within a gated development on the banks of the River Thames. EPC: E

- Newly converted warehouse
- Gated development
- Second floor apartment
- Recently refurbished
- Spacious reception
- Open plan kitchen
- 2x double bedrooms
- 2 x bathroom/WC
- Smart home technology
- Dedicated building manager

T: 020 7691 9000

E: info@excel-property.co.uk

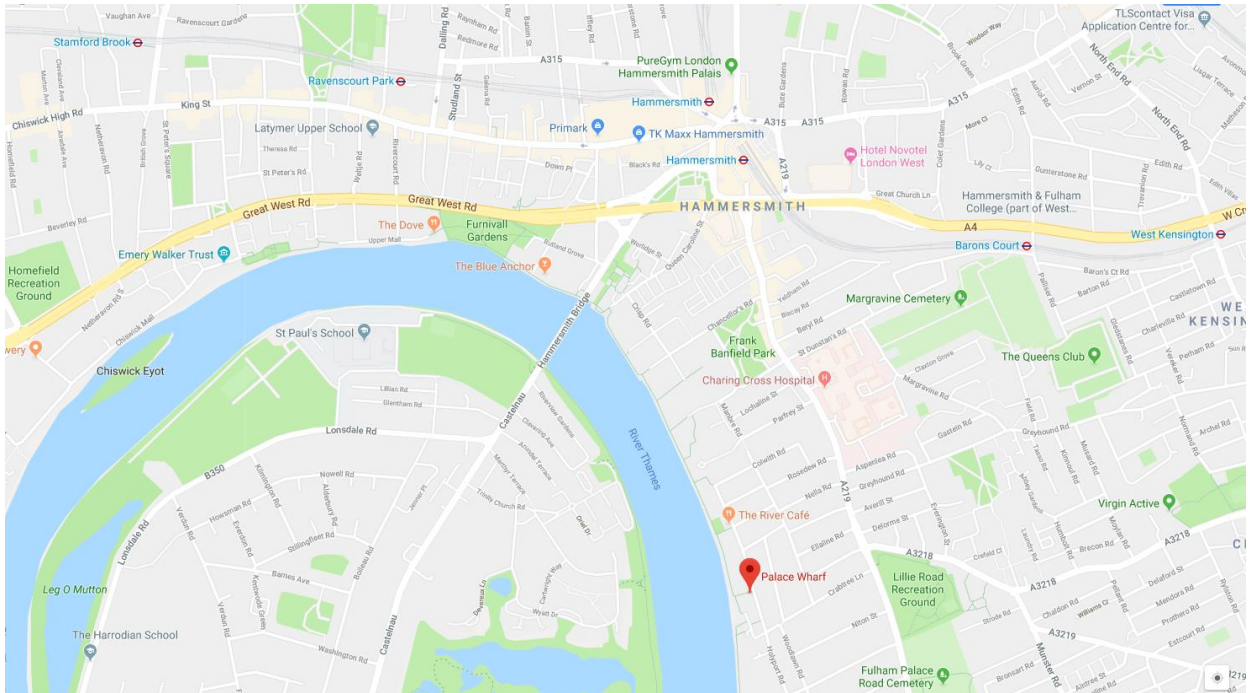
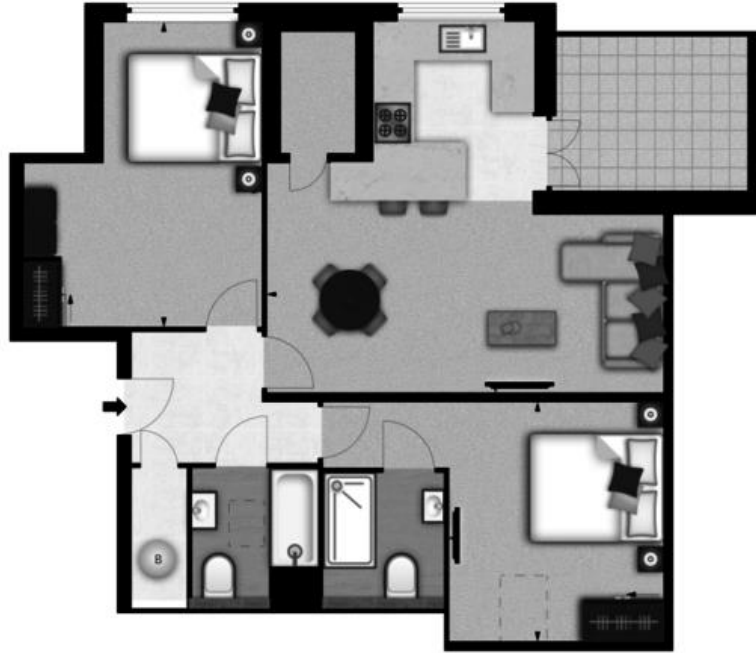
W: www.excel-property.co.uk

JP: www.excel-property.london/JP

A: 146 Finchley Road, London, NW3 5HS



PALACE WHARF APARTMENTS, RAINVILLE ROAD, HAMMERSMITH, LONDON, W6



T: 020 7691 9000

E: info@excel-property.co.uk

W: www.excel-property.co.uk

JP: www.excel-property.london/JP

A: 146 Finchley Road, London, NW3 5HS

