

STRATHMORE COURT, PARK ROAD, ST JOHNS WOOD NW8 7HY



£820 PW

[£3,553.33 PCM]

[FEES APPLY]

2 BEDROOM(S)

AVAILABLE: NOW

A superb ground floor two bedroom apartment with a spacious garden set within a ported building opposite the stunning Regents Park in St John's Wood. EPC: E.

- Ground floor apartment
- Private patio garden
- Furnished or unfurnished
- Approx 896 sq ft (83.24 sq m)
- Bright reception
- Large master bedroom
- 2nd double bedroom
- Bespoke kitchen
- 1 x bathroom/ WC
- Daytime porters

T: 020 7691 9000

E: info@excel-property.co.uk

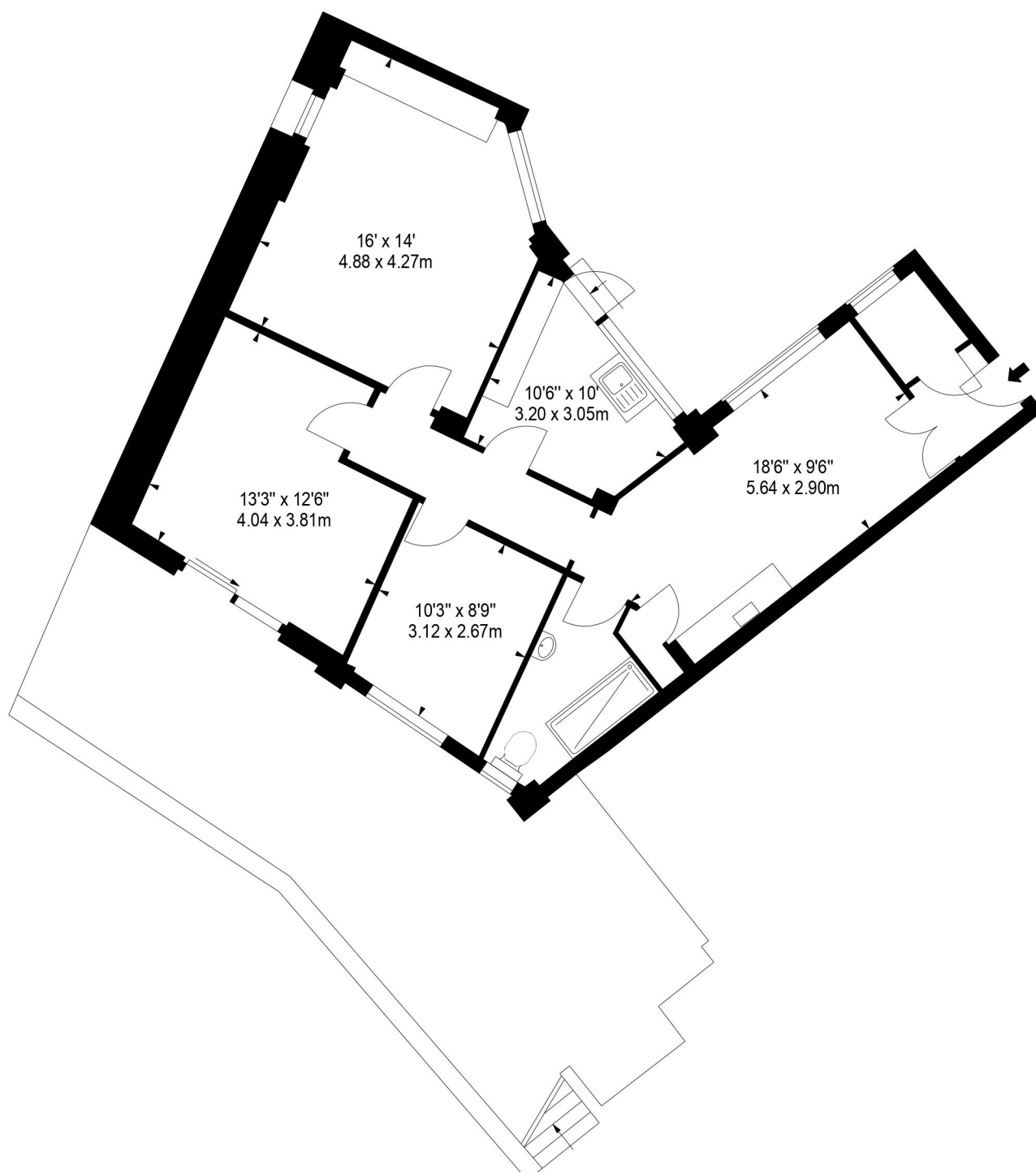
W: www.excel-property.co.uk

JP: www.excel-property.london/JP

A: 146 Finchley Road, London, NW3 5HS



STRATHMORE COURT, PARK ROAD, ST JOHNS WOOD NW8 7HY



T: 020 7691 9000

E: info@excel-property.co.uk

W: www.excel-property.co.uk

JP: www.excel-property.london/JP

A: 146 Finchley Road, London, NW3 5HS

